



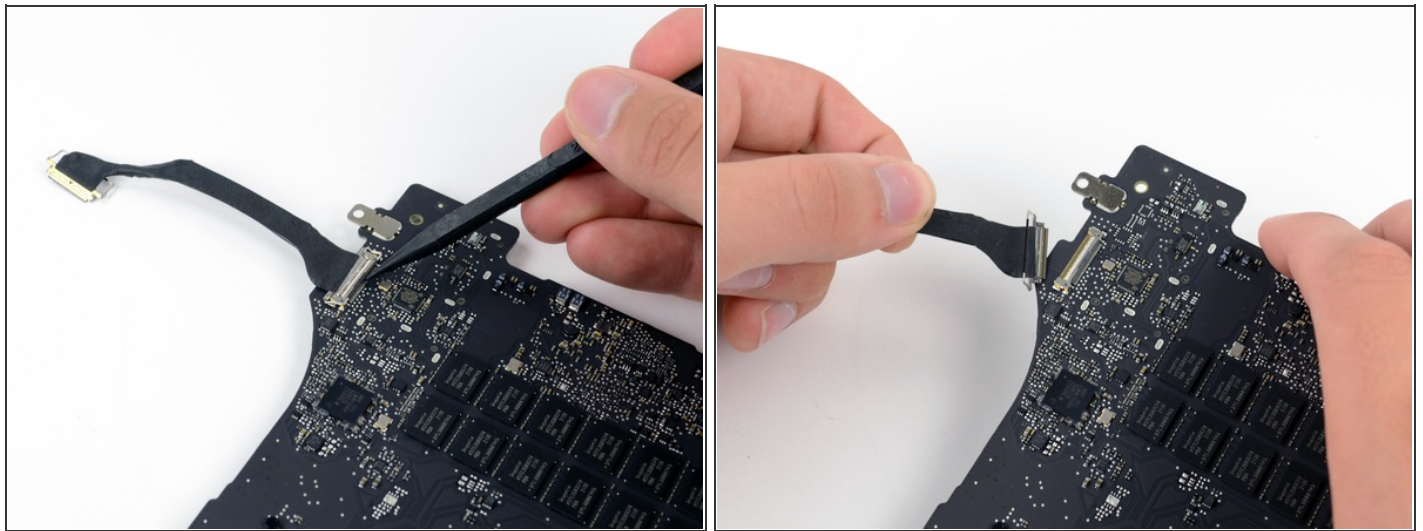
Installing MacBook Pro 15" Retina Display Mid 2012 HDMI Data Transfer Cable

Written By: Jake Devincenzi

SUMMARY

Pre-req only

Step 1 — HDMI Data Transfer Cable



- Use the tip of a spudger to pry the HDMI data transfer cable lock and rotate it upwards.
- Pull the HDMI data transfer cable straight out of its socket on the logic board.
- Do not lift up on the display data cable, as its socket is very fragile. Pull the cable parallel to the face of the logic board.



To reassemble your device, follow these instructions in reverse order.

This document was last generated on 2012-10-31 08:48:40 AM.